

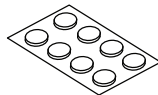
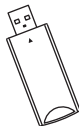
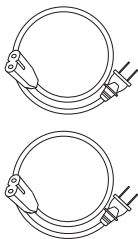
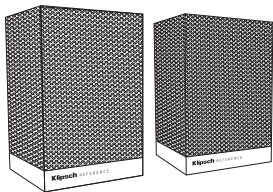
# SURROUND 3

**Klipsch**



# INSIDE

CONTENU • CONTENIDO • INHALT • CONTENUTO • CONTEÚDO • 目录



## Wireless Speaker

Haut-parleur sans fil  
Altavoz inalámbrico  
Drahtloser Lautsprecher  
Altoparlante wireless  
Caixa acústica sem fio  
无线扬声器

## DC Power Cord

Cordon d'alimentation c.c.  
Cordón de alimentación de CC  
Gleichstromkabel  
Cavo di alimentazione CC  
Cabo de alimentação de CC  
直流电源线

## Transmitter

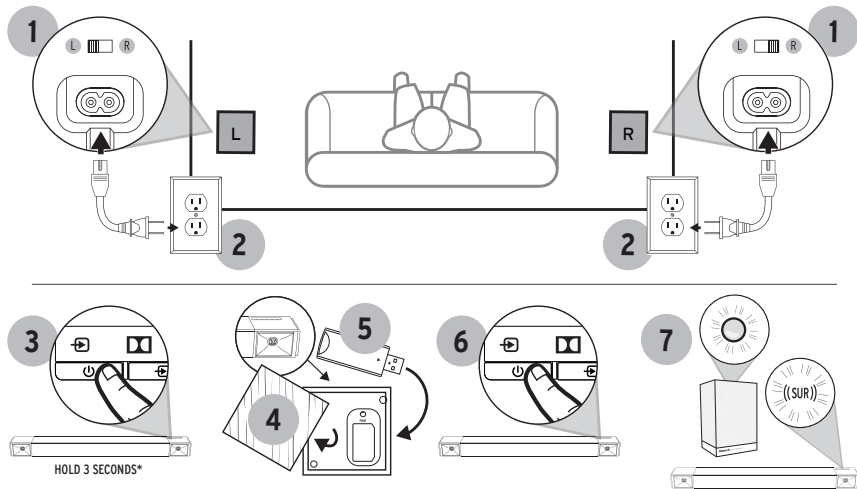
Émetteur  
Transmisor  
Transmitter  
Trasmettitore  
Transmissor  
发射器

## Rubber Feet

Pieds en caoutchouc  
Patas de goma  
Gummifüßchen  
Piedini in gomma  
Pés de borracha  
橡胶脚

# SETUP

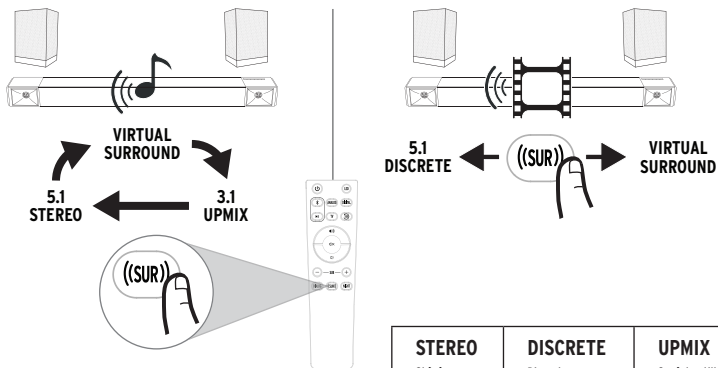
CONFIGURATION • CONFIGURACIÓN • INSTALLATION • IMPOSTAZIONE • INSTALAÇÃO • 设置



\*APPUYER PENDANT 3 SECONDES • MANTENGA OPRIMIDO DURANTE 3 SEGUNDOS • 3 SEKUNDEN GEDRÜCKT HALTEN • TENERE PREMUTO PER 3 SECONDI • MANTER PRESSIONADO POR 3 SEGUNDOS • 保持 3 秒

# SURROUND BUTTON

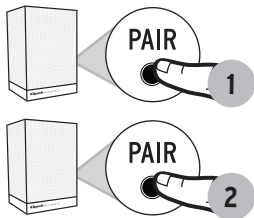
BOUTON SURROUND • BOTÓN DEL SURROUND • SURROUND-TASTE • PULSANTE SURROUND • BOTÃO SURROUND • 环绕按钮



STEREO	DISCRETE	UPMIX
Stéréo	Discret	Suréchantillonnage
Estéreo	Discreto	Aumento multicanal
Stereo	Diskret	Upmix
Stereo	Discreto	Upmix
Estéreo	Discreto	Upmix
立体声	离散型	上混

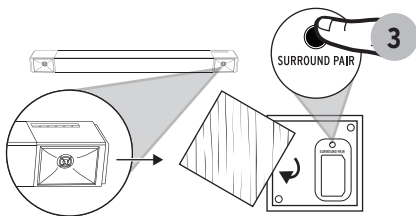
## SURROUND PAIRING

APPAIRAGE SURROUND • VINCULACIÓN DEL SURROUND • SURROUND-VERBINDUNG • ASSOCIAZIONE SURROUND • PAREAMENTO SURROUND • 环绕配对



### Hold 3 Seconds

Appuyer pendant 3 secondes  
Mantenga oprimido durante 3 segundos  
3 Sekunden gedrückt halten  
Tenere premuto per 3 secondi  
Manter pressionado por 3 segundos  
保持 3 秒

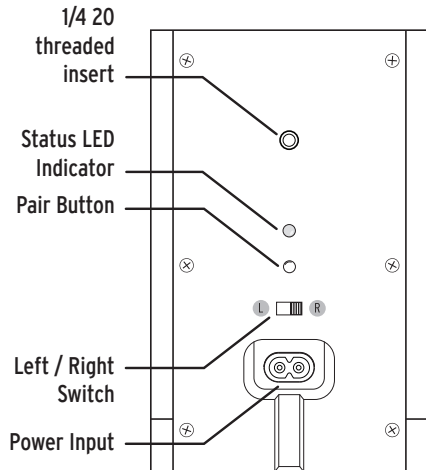


### Hold 3 Seconds

Appuyer pendant 3 secondes  
Mantenga oprimido durante 3 segundos  
3 Sekunden gedrückt halten  
Tenere premuto per 3 secondi  
Manter pressionado por 3 segundos  
保持 3 秒

## BACK PANEL

PANNEAU ARRIÈRE • PANEL TRASERO • RÜCKWAND • PANNELLO POSTERIORE • PAINEL TRASEIRO • 后面板



### Status LED Indicator

Voyant indicateur de l'état  
Indicador LED de estado  
Status-LED  
Spia LED dello stato  
LED indicador de status  
状态LED指示灯

### 1/4 20 Threaded Input

Entrée filetée 1/4 20  
Entrada roscada 1/4 20  
1/4 20 Gewinde  
Ingresso filettato 1/4 20  
Entrada rosqueada 1/4 20  
1/4 20 螺紋輸入

### Pair Button

Voyant indicateur de l'état  
Indicador LED de estado  
Status-LED  
Spia LED dello stato  
LED indicador de status  
状态LED指示灯

### Left / Right Switch

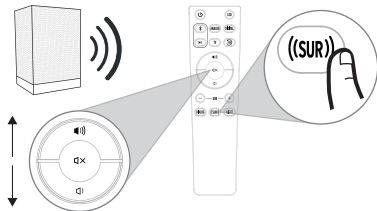
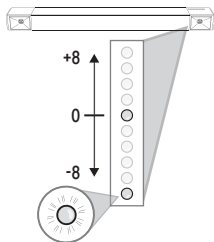
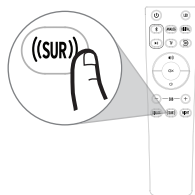
Entrée filetée 1/4 20  
Entrada roscada 1/4 20  
1/4 20 Gewinde  
Ingresso filettato 1/4 20  
Entrada rosqueada 1/4 20  
1/4 20 螺紋輸入

### Power Input

Prise d'alimentation  
Entrada de alimentación  
Netzanschluss  
Connettore di alimentazione  
Entrada de alimentação elétrica  
电源输入口

# SURROUND VOLUME

APPARAGE SURROUND • VINCULACIÓN DEL SURROUND • SURROUND-VERBINDUNG • ASSOCIAZIONE SURROUND • PAREAMENTO SURROUND • 环绕配对



## Hold 3 Seconds

Prise d'alimentation  
Entrada de alimentación  
Netzanschluss  
Connettore di alimentazione  
Entrada de alimentação elétrica  
电源输入口

## Orange LED

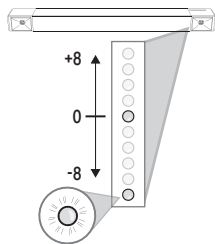
Prise d'alimentation  
Entrada de alimentación  
Netzanschluss  
Connettore di alimentazione  
Entrada de alimentação elétrica  
电源输入口

## Left Surround

Prise d'alimentation  
Entrada de alimentación  
Netzanschluss  
Connettore di alimentazione  
Entrada de alimentação elétrica  
电源输入口

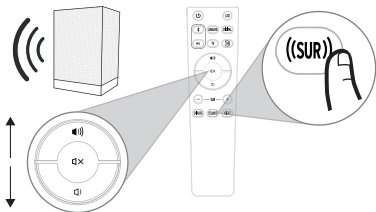
## Press Once

Prise d'alimentation  
Entrada de alimentación  
Netzanschluss  
Connettore di alimentazione  
Entrada de alimentação elétrica  
电源输入口



### Red LED

Prise d'alimentation  
 Entrada de alimentación  
 Netzanschluss  
 Connettore di alimentazione  
 Entrada de alimentação elétrica  
 电源输入口



### Right Surround

Prise d'alimentation  
 Entrada de alimentación  
 Netzanschluss  
 Connettore di alimentazione  
 Entrada de alimentação elétrica  
 电源输入口

### Hold 3 Seconds

Prise d'alimentation  
 Entrada de alimentación  
 Netzanschluss  
 Connettore di alimentazione  
 Entrada de alimentação elétrica  
 电源输入口



## TROUBLESHOOTING

---

DÉPANNAGE • SOLUCIÓN DE PROBLEMAS • FEHLERBEHEBUNG • RISOLUZIONE DEI PROBLEMI • SOLUÇÃO DE PROBLEMAS • 故障排除

### **I Don't Hear Sound from my Surround Speakers**

- 1. Verify that the left and right surrounds speakers are plugged in to a power source.**
- 2. Check that the Surround 3 transmitter is inserted into the soundbar.**
- 3. Check the LED light on the back of each speaker.**
  - If it is solid, turn up the Surround Volume using the Surround Speaker Level Adjust procedure.
  - If it is flashing, sync the surround speakers to the soundbar using the following instructions:
    - 1. Remove end cap**
    - 2. Press the Surround Pair button for 3 seconds on both speakers**
    - 3. Press the Pair button on the back of the surround speaker that is flashing for 3 seconds until it glows solid.**

**Klipsch**<sup>®</sup>  
KEEPERS OF THE SOUND<sup>™</sup>