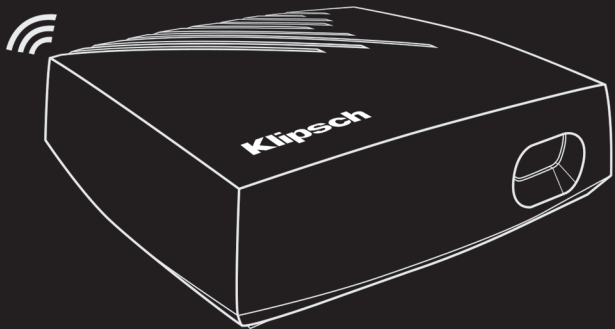


Klipsch®

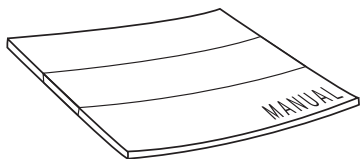
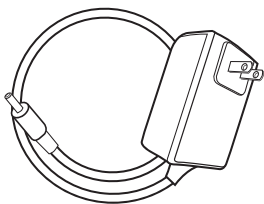
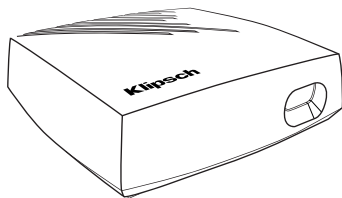


WA-3 WIRELESS SUBWOOFER KIT

OWNER'S MANUAL

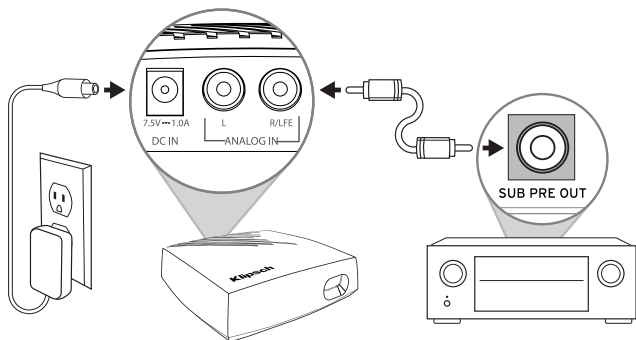
CONTENTS

CONTENTS CONTENU CONTENIDO INHALT CONTIENE CONTEÚDO 内容

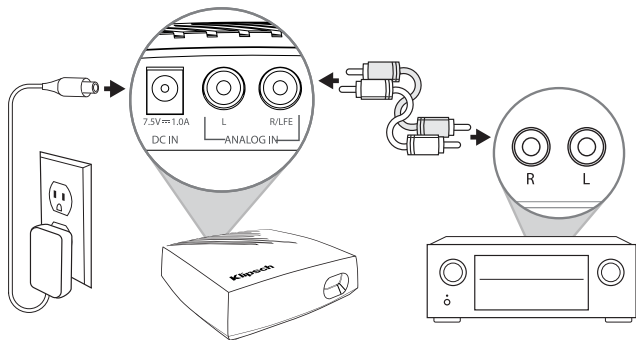


CONNECTIONS

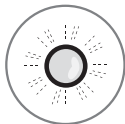
CONNEXIONS CONEXIONES ANSCHLÜSSE CONNESSION CONEXÕES 连接



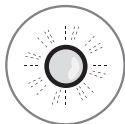
OR 0 Ou Oder 0 Ou 要么



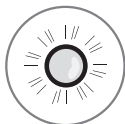
LEDS



LED Blinks Slowly	Subwoofer Not Paired
DEL cliquant lentement	Caissons d'extrêmes graves non appariés
El indicador LED parpadea lentamente	Subwoofer no vinculado
LED blink langsam	Verbindung des Subwoofers gescheitert
Il LED lampeggia lentamente	Il subwoofer non è associato
LED piscando lentamente	Subwoofer não pareado
发光二极管缓慢闪烁	低音炮未配对



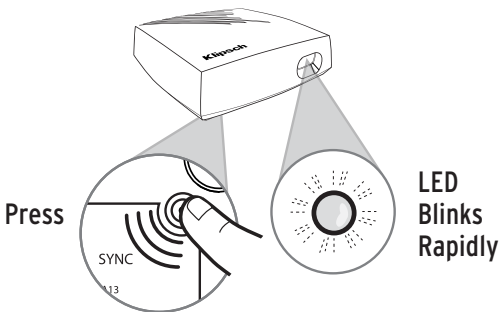
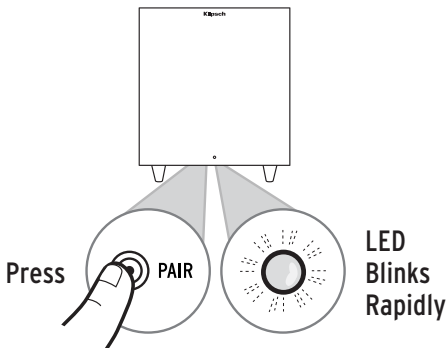
LED Blinks Rapidly	Subwoofer in Pairing Mode
DEL cliquant rapidement	Caissons d'extrêmes graves en mode d'appariement
El indicador LED parpadea rápidamente	Subwoofer en modalidad de vinculación
LED blink schnell	Subwoofer im Verbindungsmodus
Il LED lampeggia rapidamente	Il subwoofer è in modalità di associazione
LED piscando rapidamente	Subwoofer no modo de pareamento
发光二极管快速闪烁	低音炮在配对模式



LED Solid	Subwoofer Paired
DEL allumée en permanence	Caissons d'extrêmes graves appariés
Indicador LED fijo	Subwoofer vinculado
LED leuchtet dauerhaft	Subwoofer verbunden
Il LED è acceso a luce fissa	Il subwoofer è associato
LED aceso	Subwoofer pareado
发光二极管常亮	低音炮已配对

PAIR

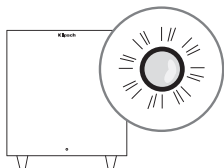
CONNEXION CONEXIÓN VERBINDEN COLLEGAMENTO CONECTAR 连接



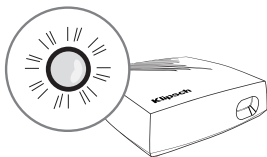
PRESS Appuyez Oprima Drücken Premere Pressionar 按下

PAIR

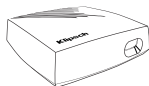
CONNEXION CONEXIÓN VERBINDEN COLLEGAMENTO CONECTAR 连接



LED Solid
Sub Connected



CONNECT UP TO THREE SUBWOOFERS



CONNEXION JUSQU'À TROIS CAISSONS D'EXTRÊMES GRAVES

CONECTE HASTA TRES SUBWOOFERS

BIS ZU DREI SUBWOOFER ANSCHLIESSEN

COLLEGARE FINO A TRE SUBWOOFER

CONECTE ATÉ TRÊS SUBWOOFERS

连接最多三个低音炮

Klipsch[®]

KEEPERS OF THE SOUND[™]

3502 WOODVIEW TRACE, INDIANAPOLIS, IN, USA